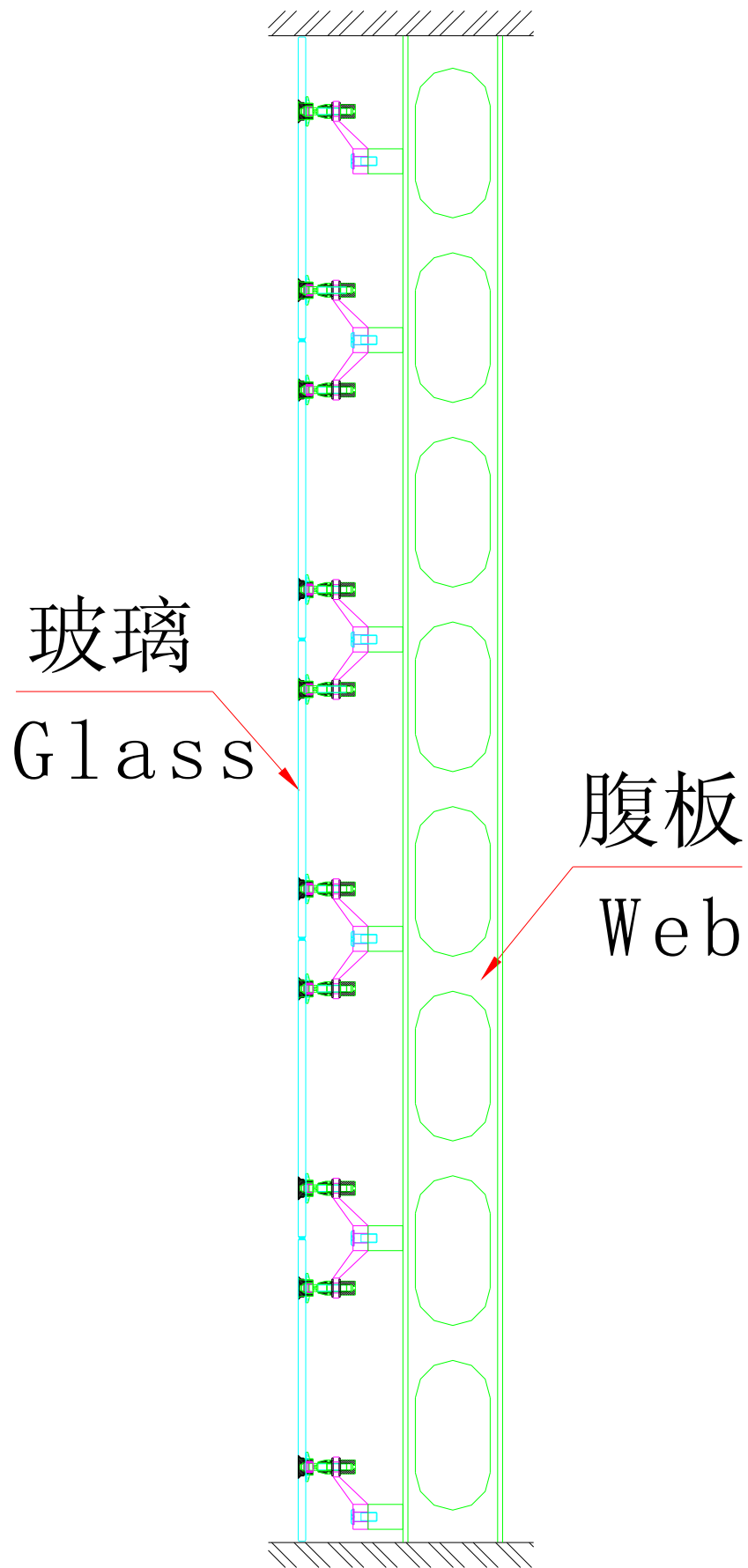
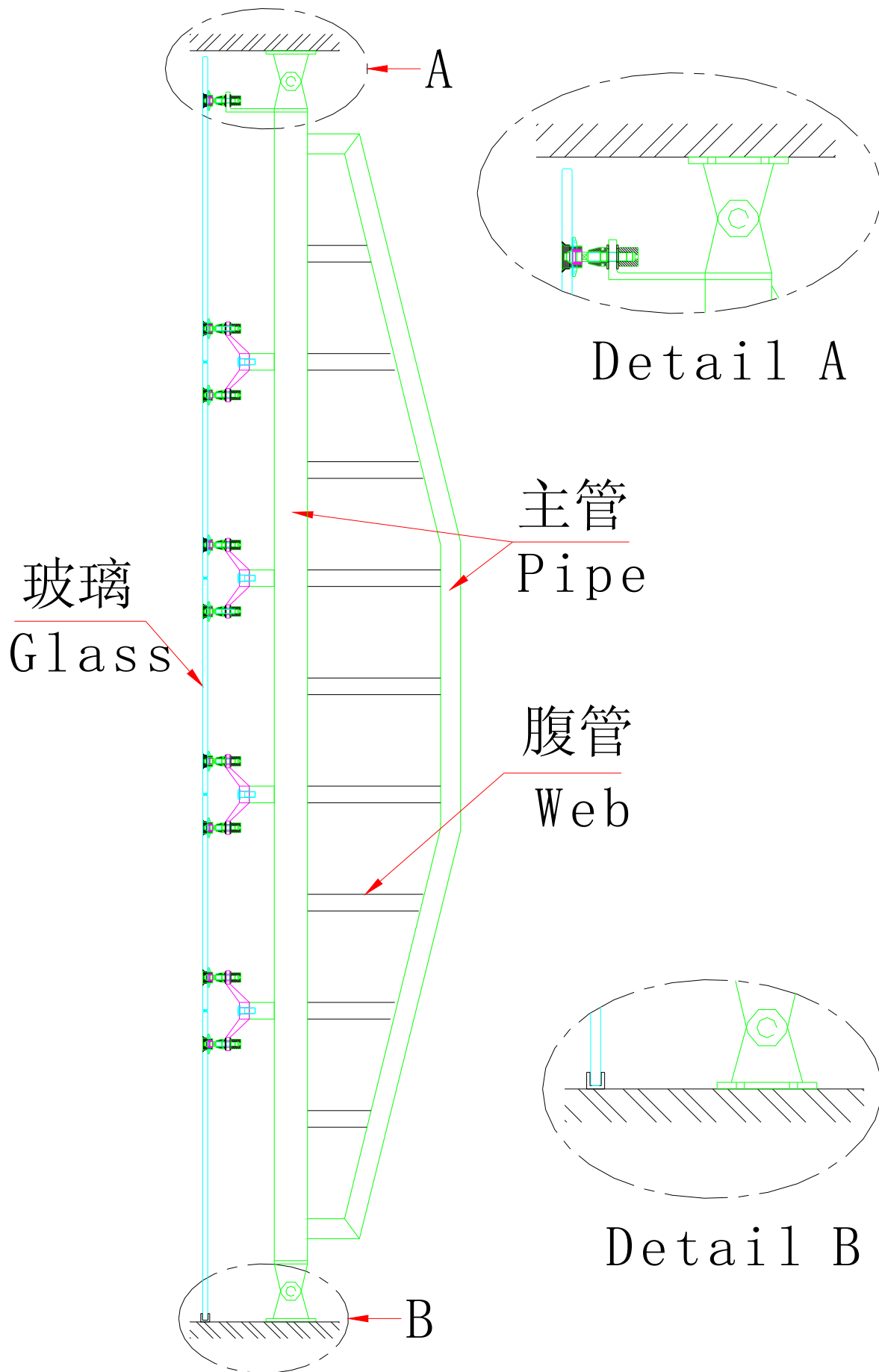


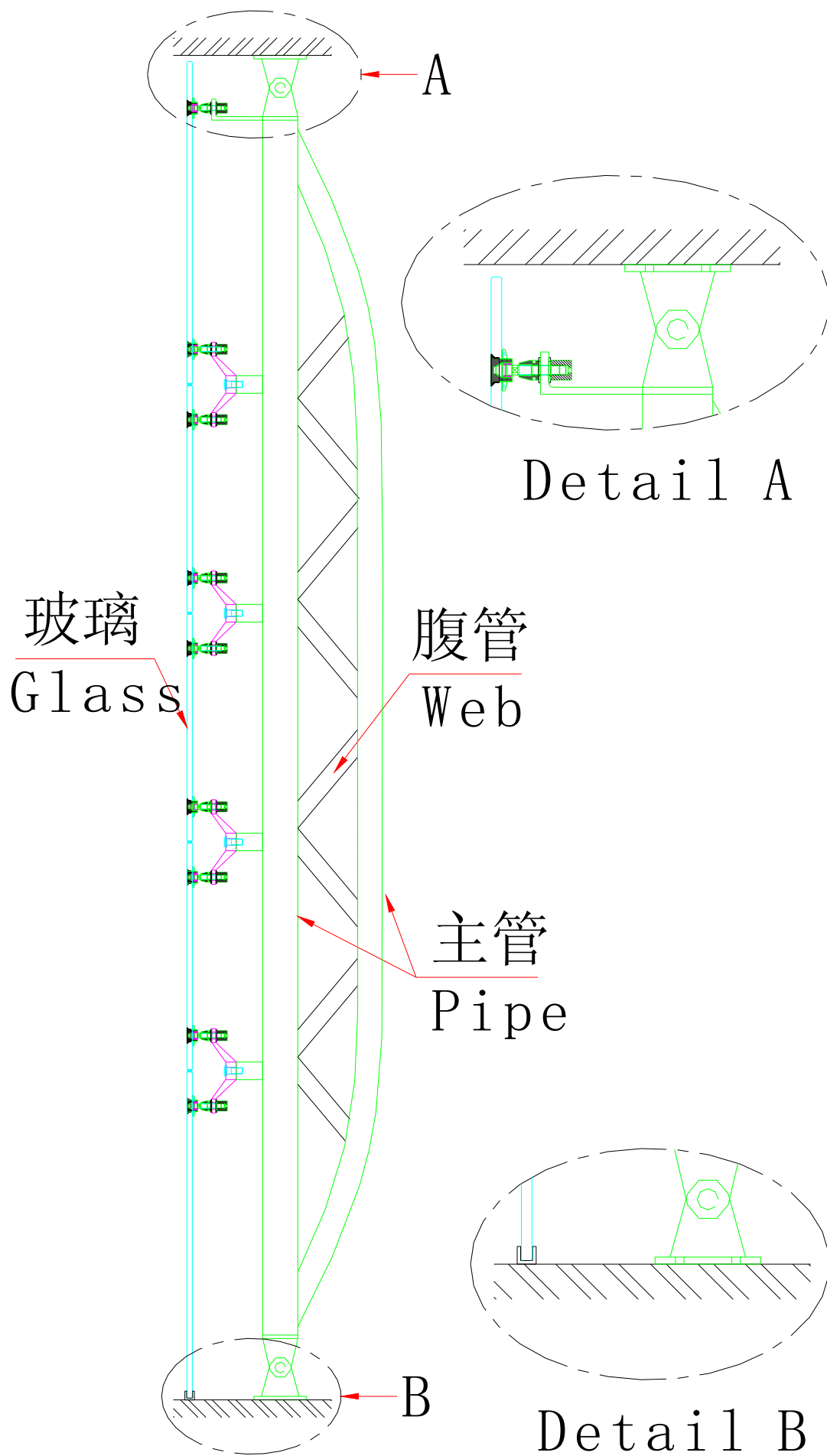
格构式钢架



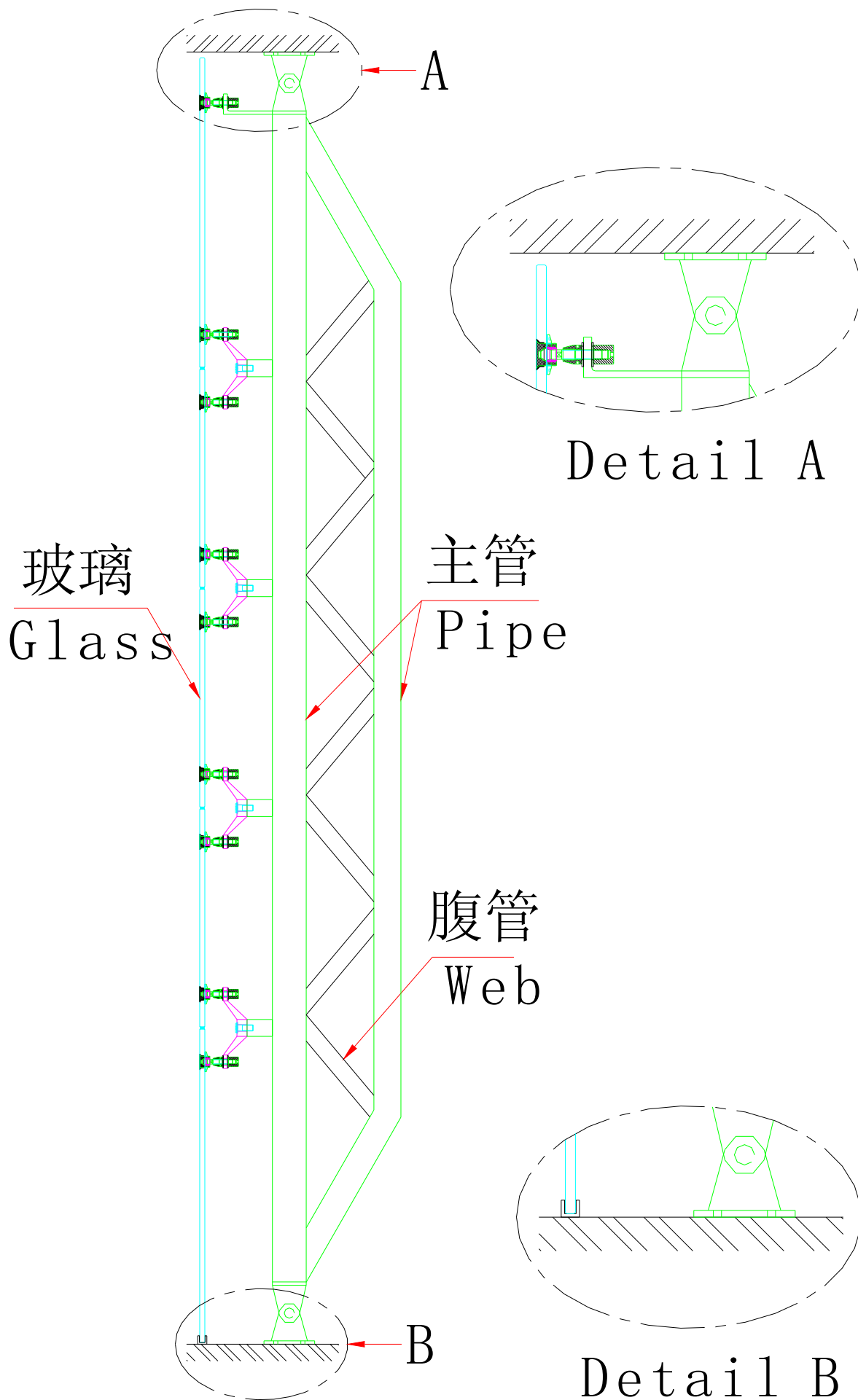
工形截面钢架



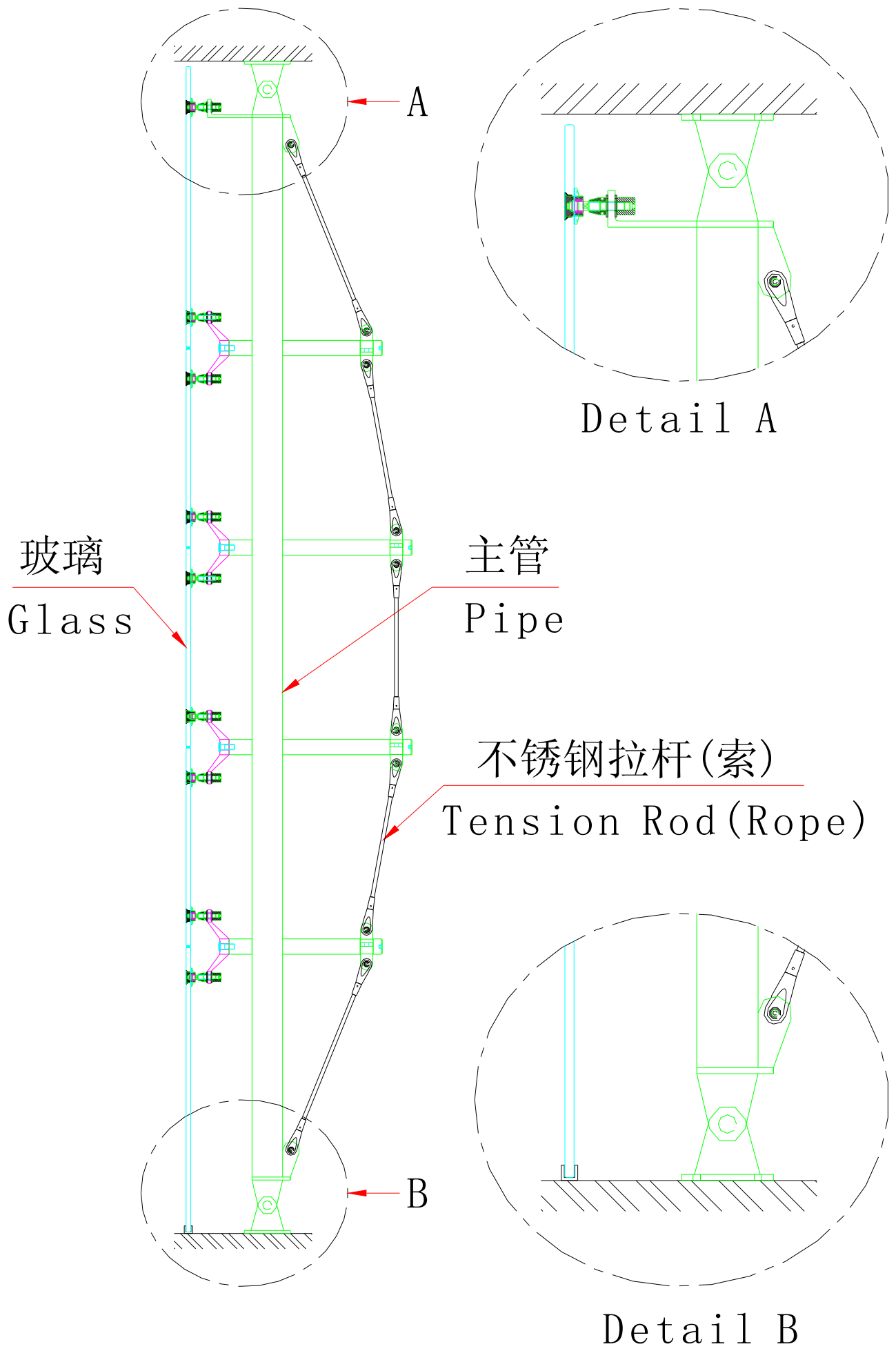
空腹弓形钢架



鱼腹式钢架



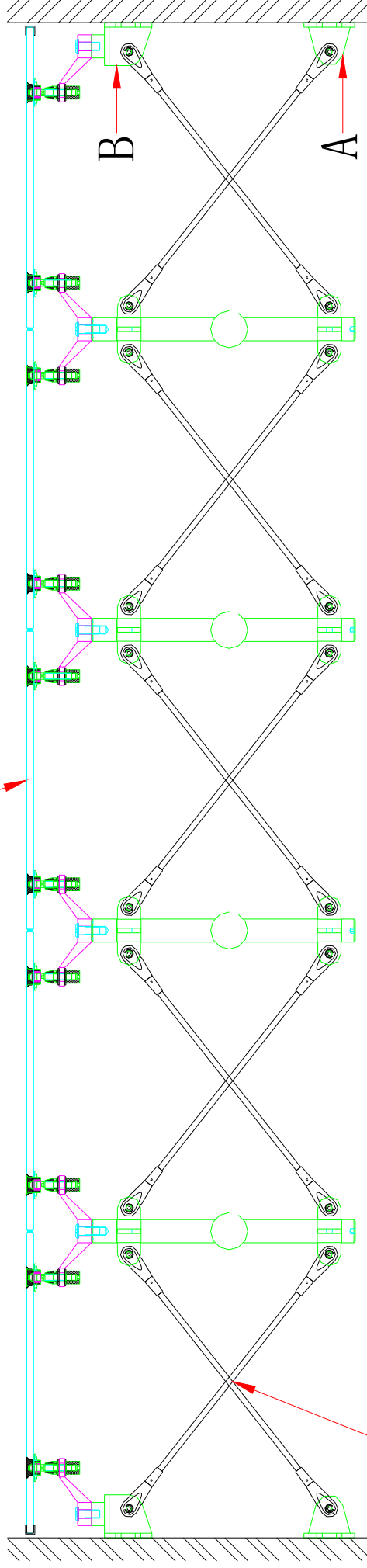
柱式钢桁架



单拉杆(索)弓弦式桁架结构

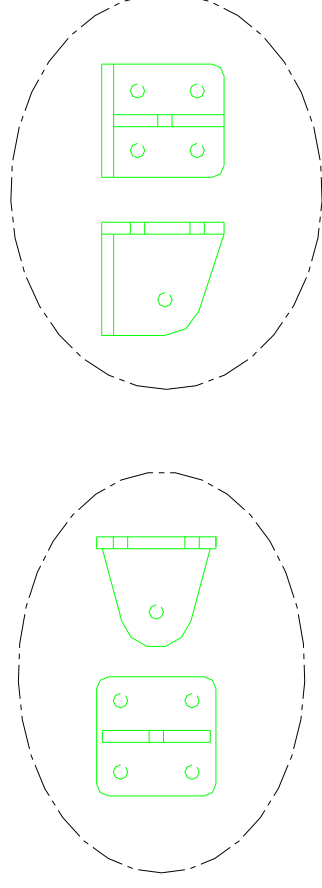
玻璃

Glass



不锈钢拉杆(索)

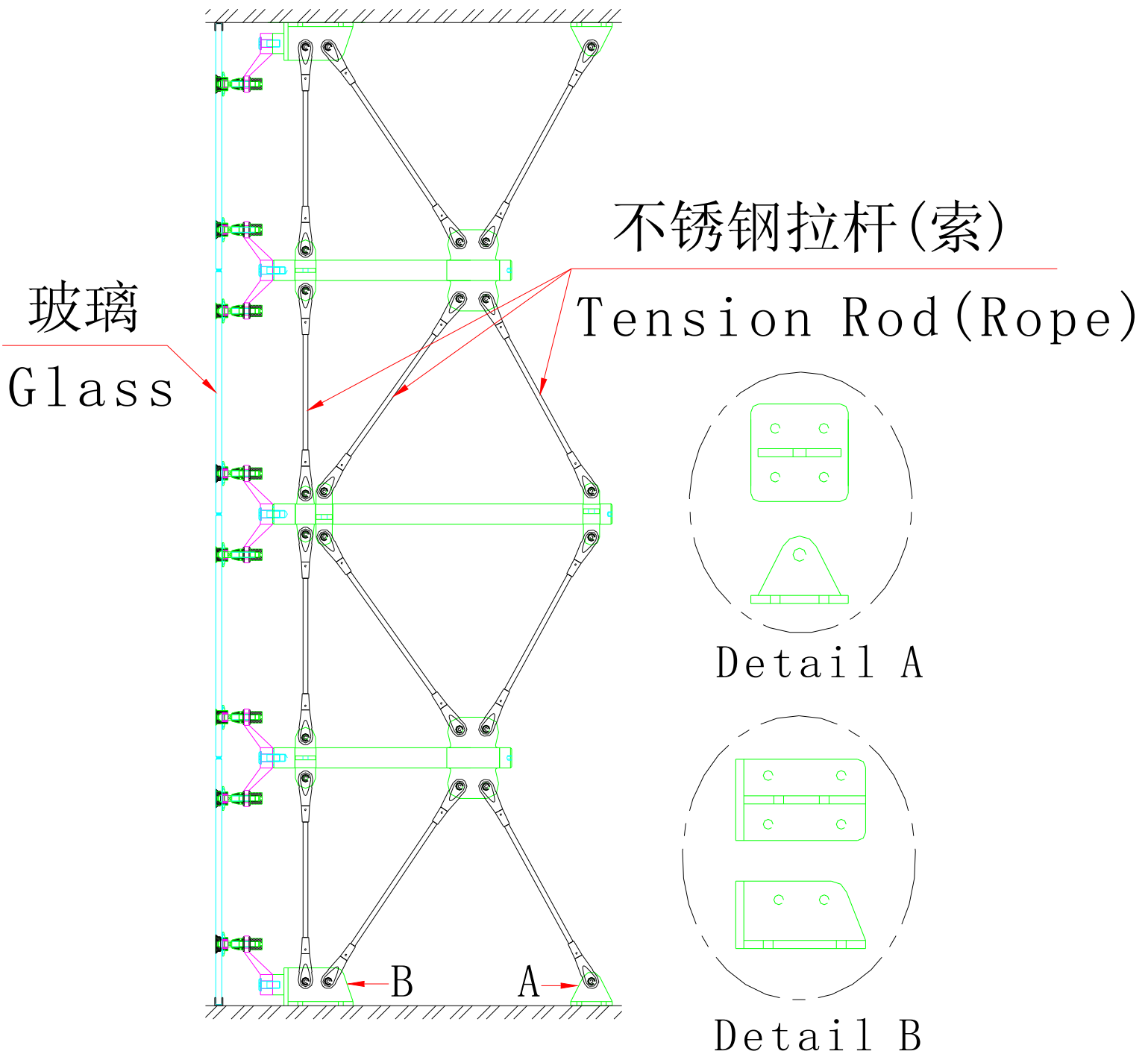
Tension Rod (Rope)



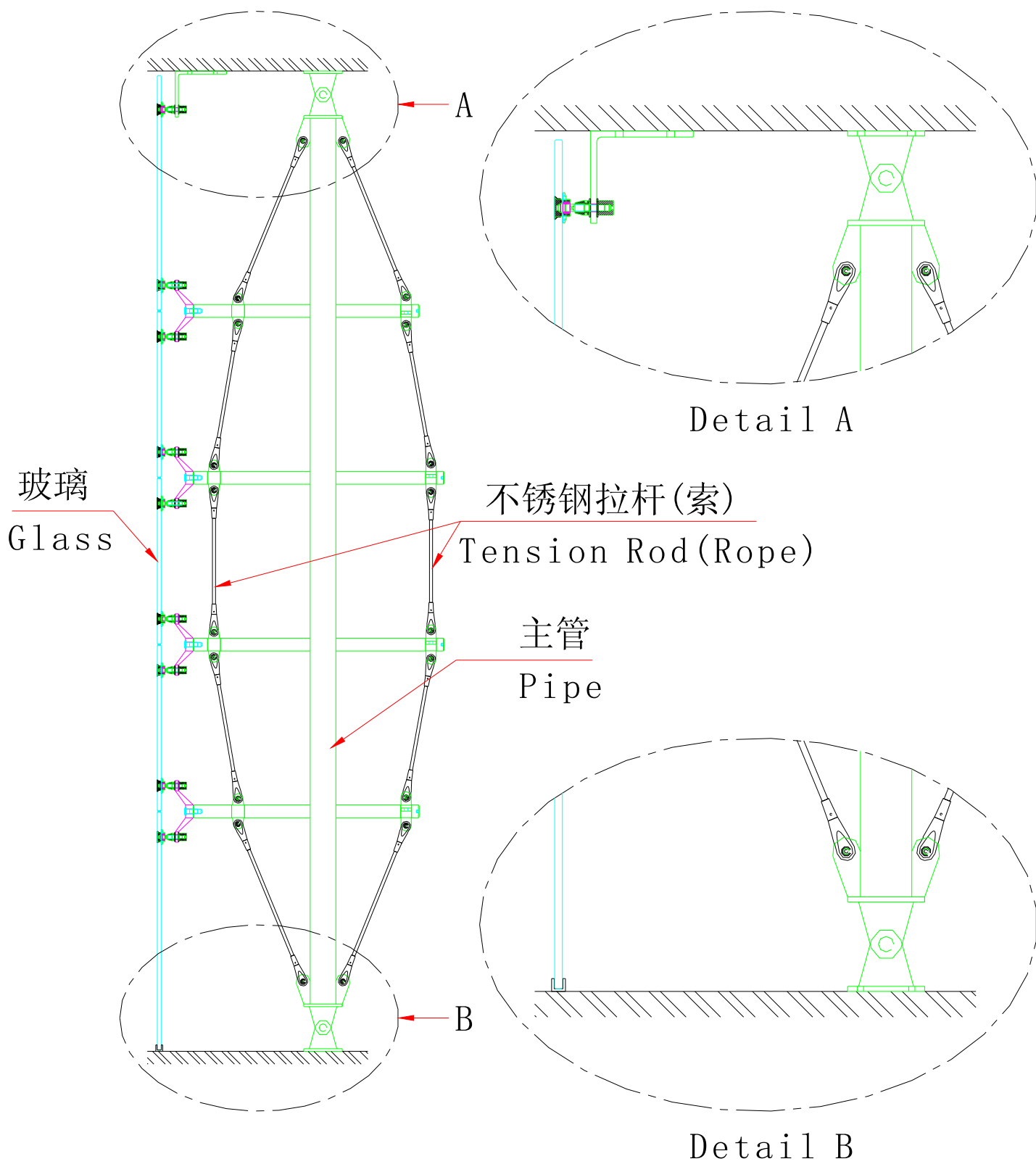
Detail A

Detail B

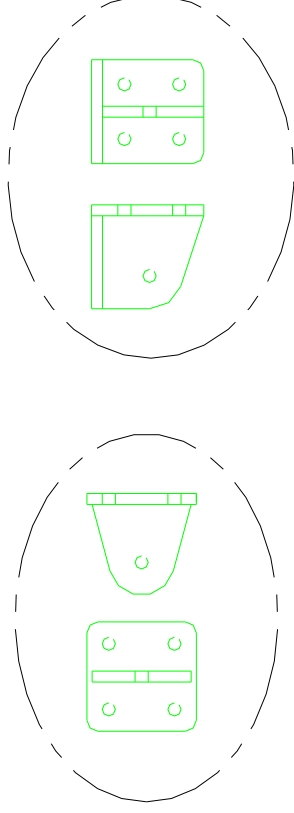
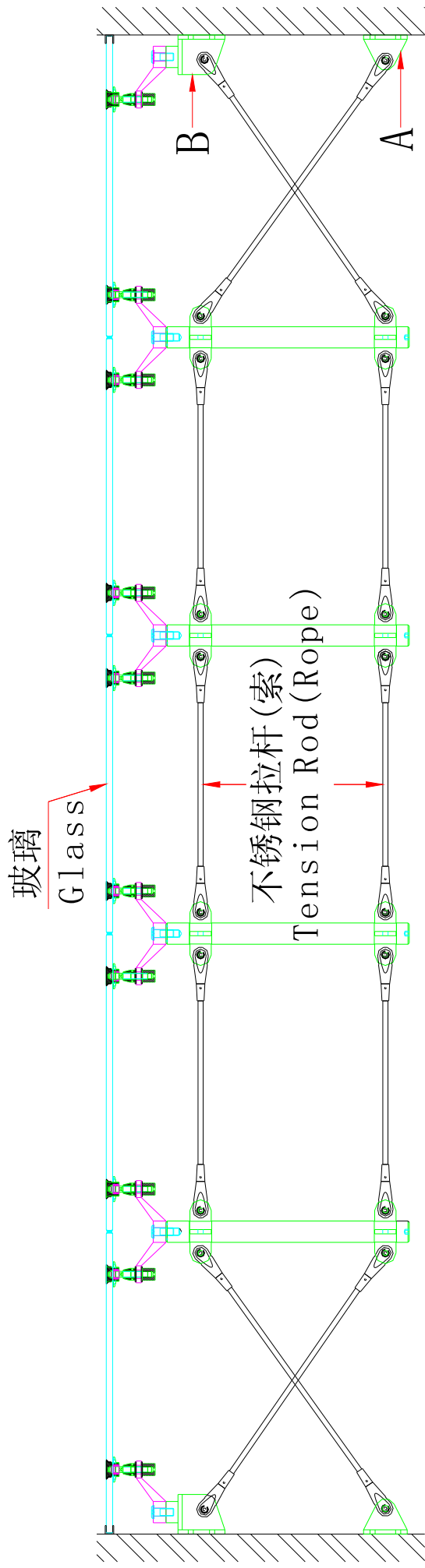
拉杆(索)弓弦式桁架结构(横向)



钢拉杆(索)竖向张拉结构



双拉杆(索)弓弦式桁架结构



Detail A

Detail B

钢拉杆(索)横向张拉结构