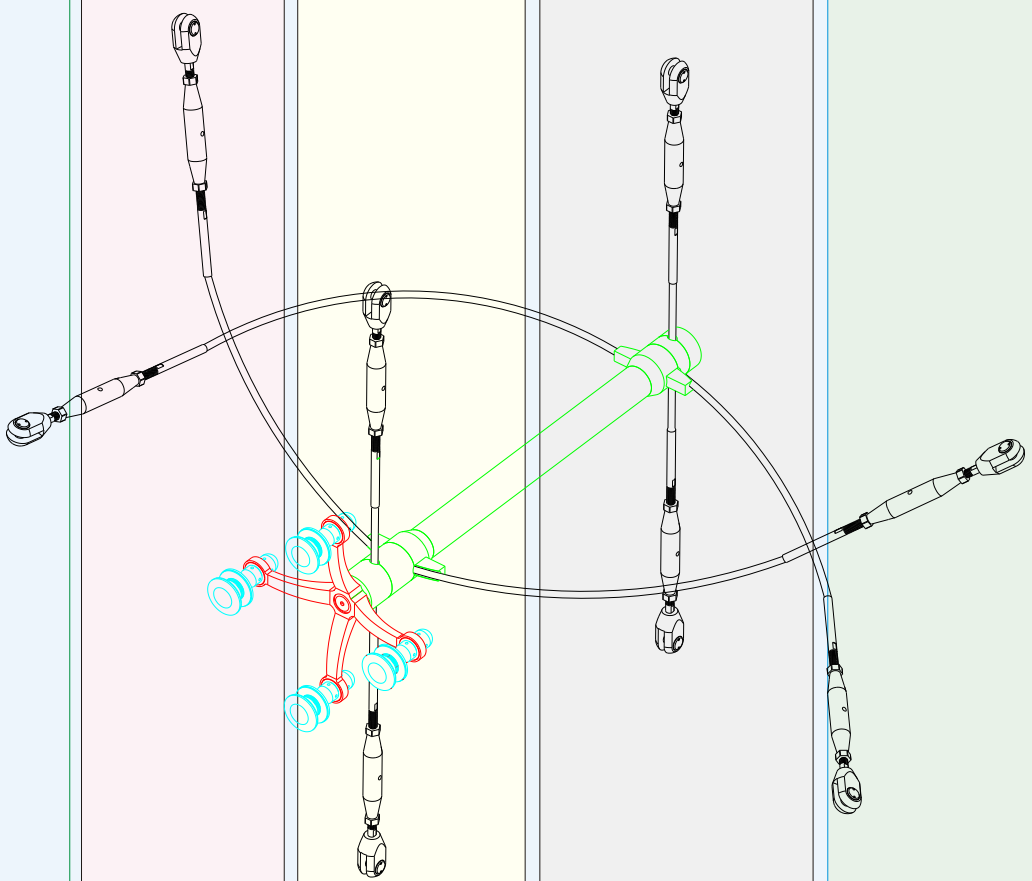


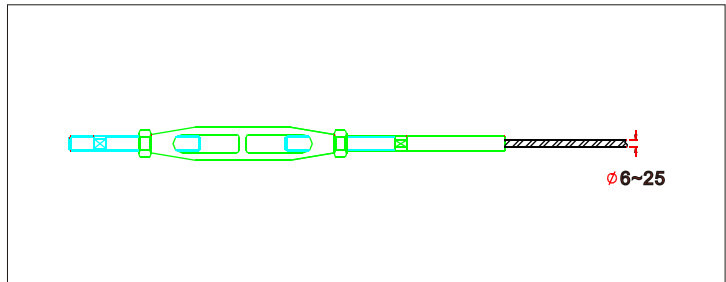
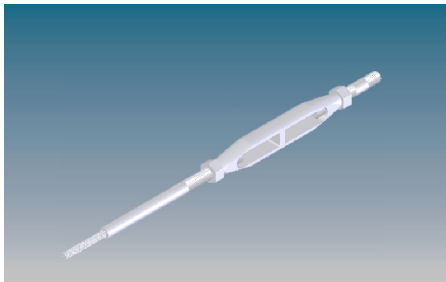
不锈钢索金属断面积与力学性能

SS CABLE SIZE & CAPACITY

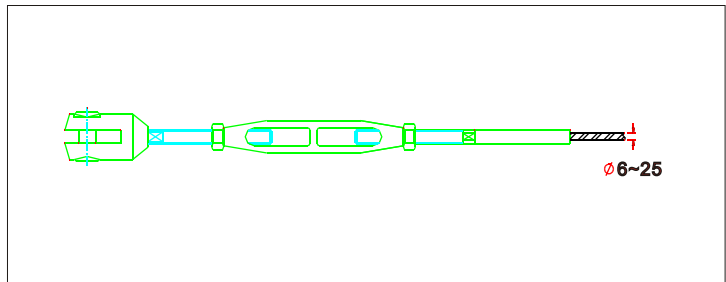
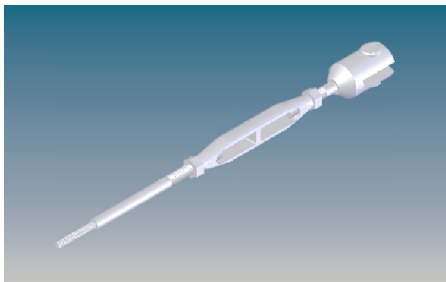
Dia. Of cable 拉索直径	Section area 金属断面积 (mm ²)	Tensile yield 拉力破坏强度 (KN)	Rating strength 设计强度 (KN)	Flexibility 弹性模量 (10 ⁵ mpa)
6	21.48	22.46	15.1	1.3~1.5
8	39.26	26.36	18.1	
10	58.7	69.92	22.3	
12	85.1	103.74	60.1	
14	118.5	153.1	117.95	
16	153.23	239.3	18.3	1.25~1.43
18	19.97	313.92	242.1	
20	228.94	376.54	287.2	
21	264.1	397.2	312.4	
25	332.95	425.2	351.6	



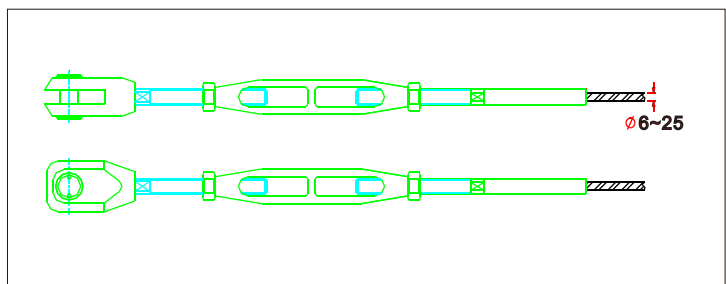
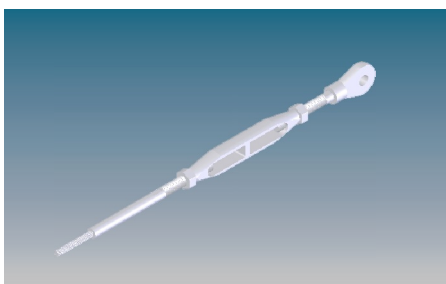
5710 拉索锚具组 Cable Fitting



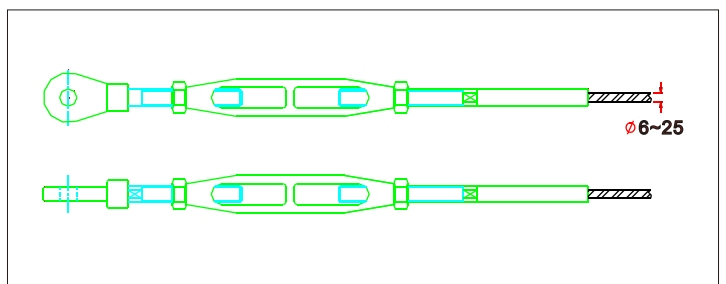
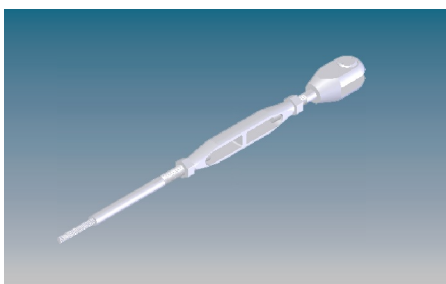
5711 拉索锚具组 Cable Fitting



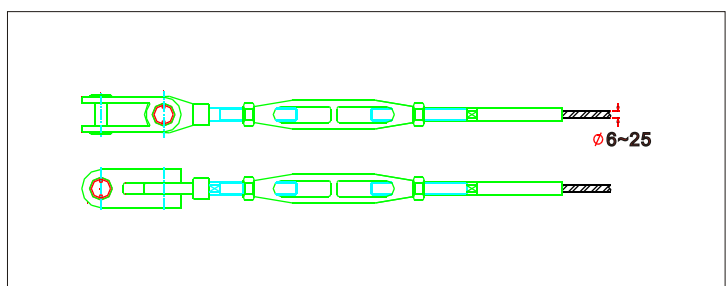
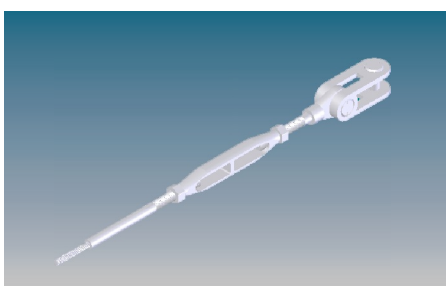
5712 拉索锚具组 Cable Fitting



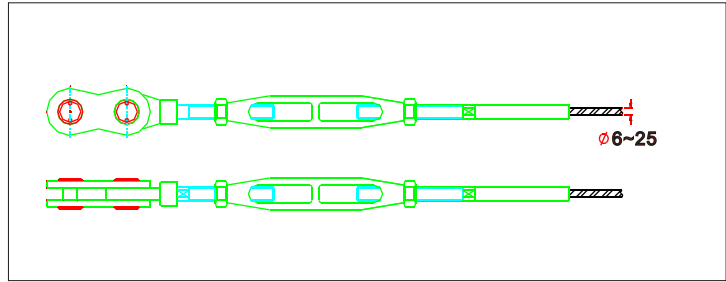
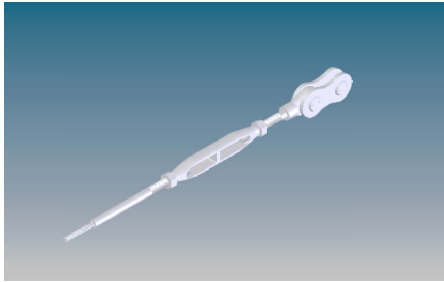
5713 拉索锚具组 Cable Fitting



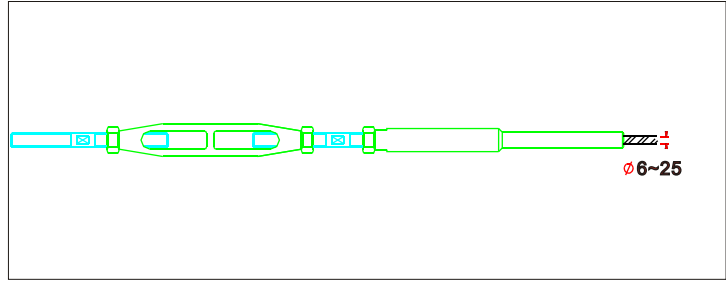
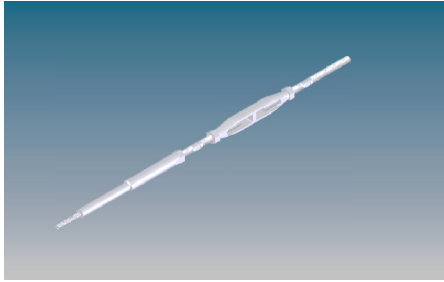
5715 拉索锚具组 Cable Fitting



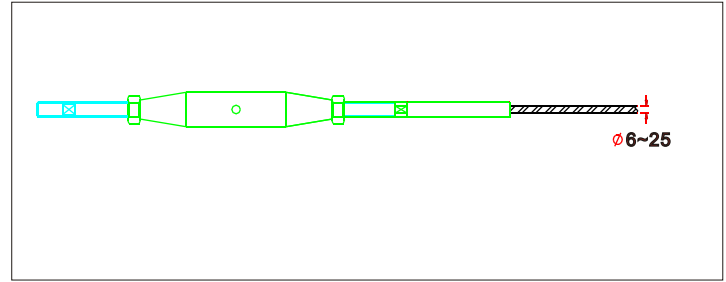
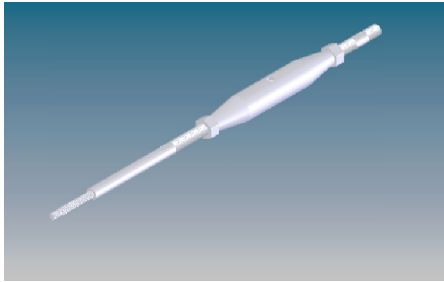
5716 拉索锚具组 Cable Fitting



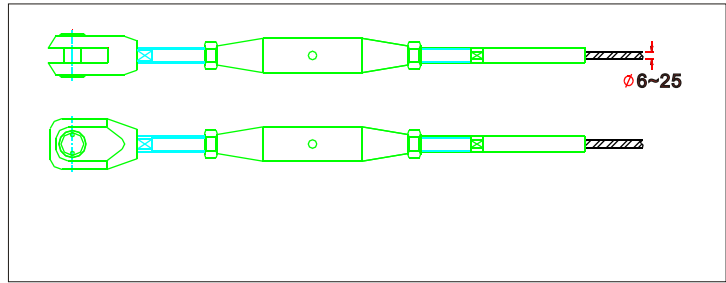
5720 拉索锚具组 Cable Fitting



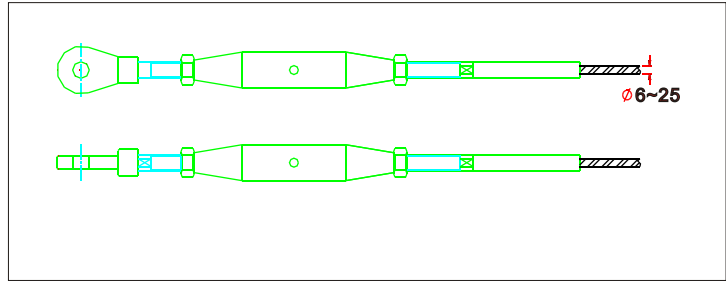
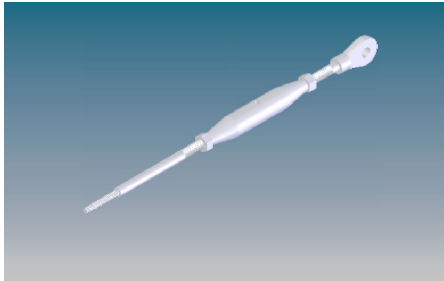
5810 拉索锚具组 Cable Fitting



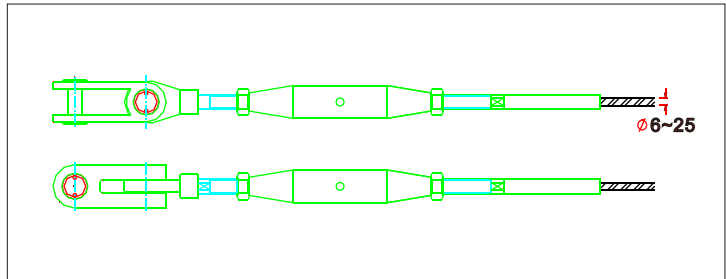
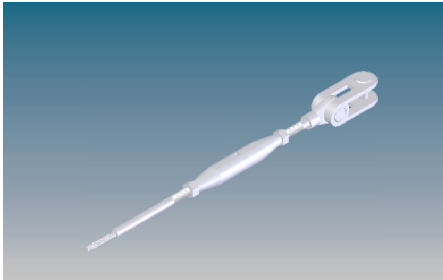
5812 拉索锚具组 Cable Fitting



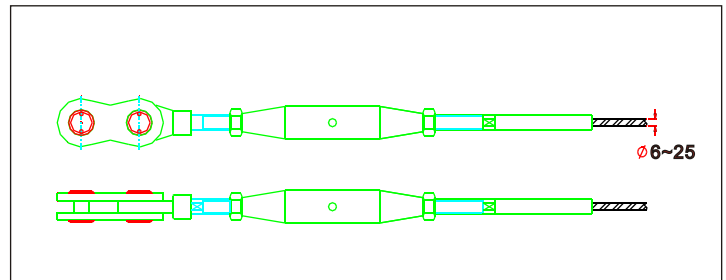
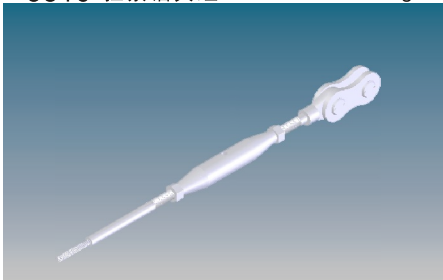
5813 拉索锚具组 Cable Fitting



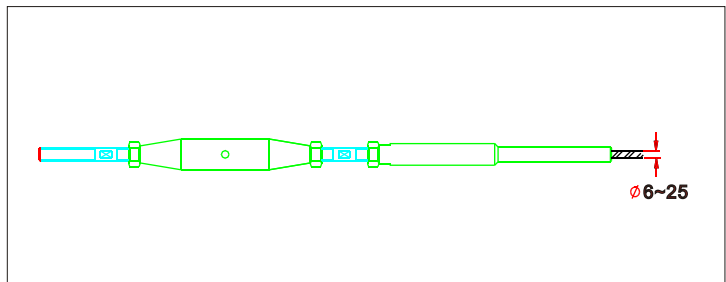
5815 拉索锚具组 Cable Fitting



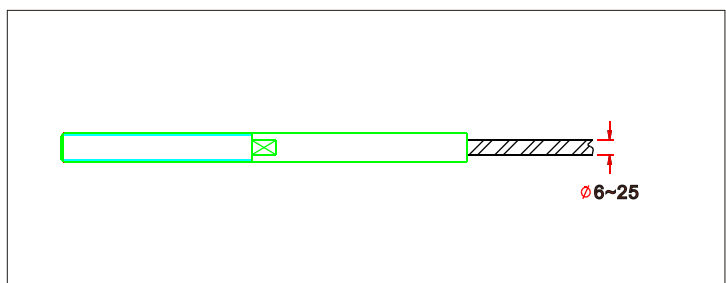
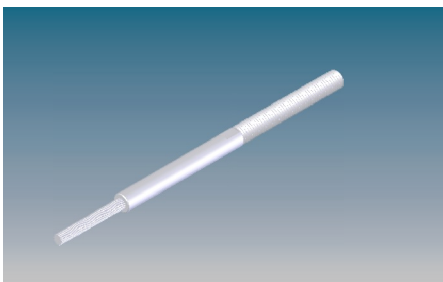
5816 拉索锚具组 Cable Fitting



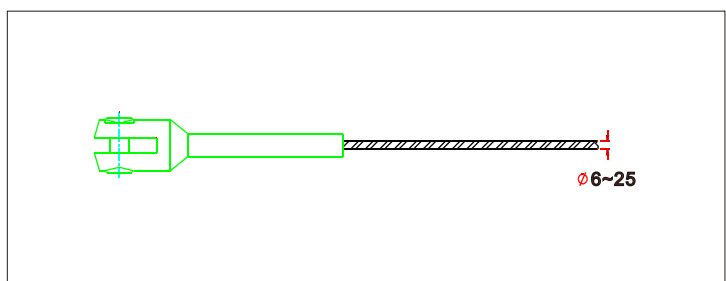
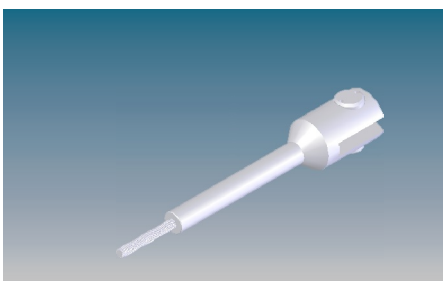
5820 拉索锚具组 Cable Fitting



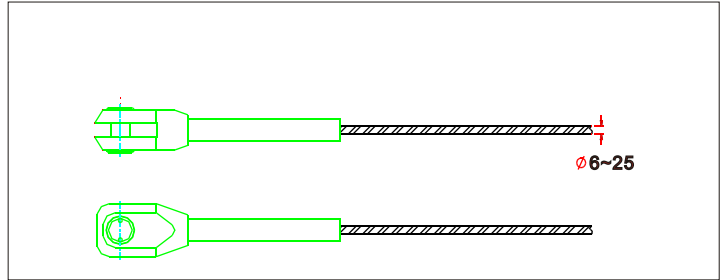
5901 拉索锚具组 Cable Fitting



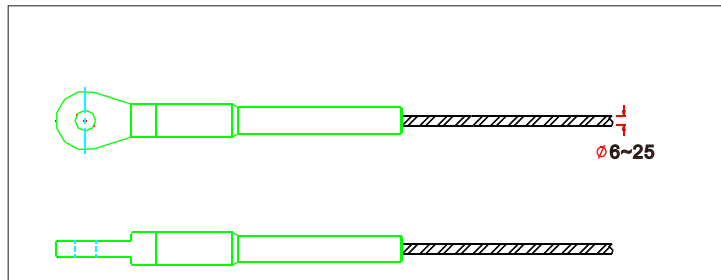
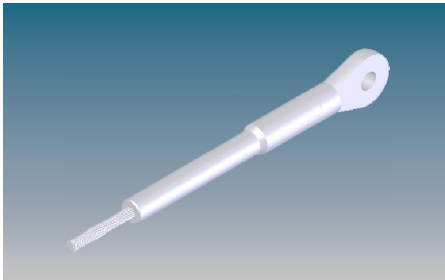
5911 拉索锚具组 Cable Fitting



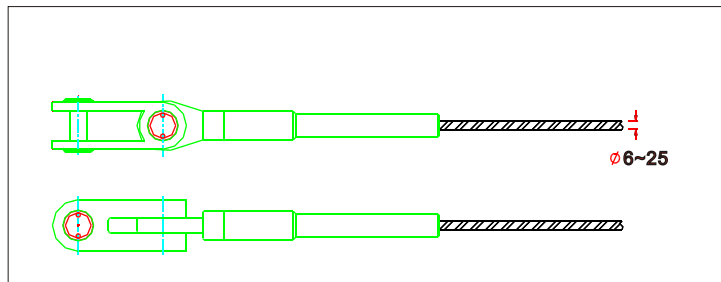
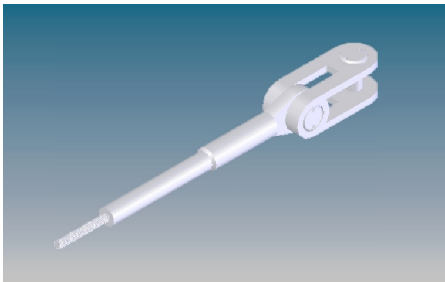
5912 拉索锚具组 Cable Fitting



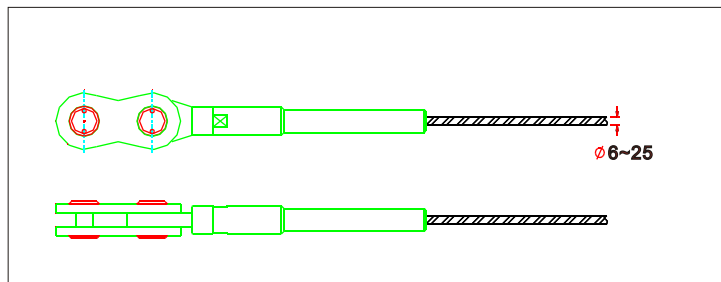
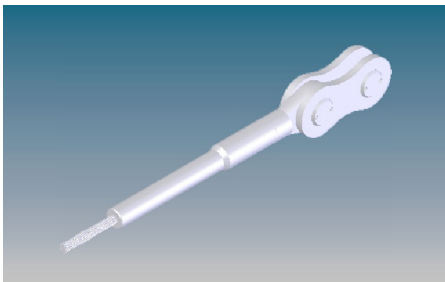
5914 拉索锚具组 Cable Fitting



5915 拉索锚具组 Cable Fitting



5916 拉索锚具组 Cable Fitting



5920 拉索锚具组 Cable Fitting

